



Reopening Bay District Schools

Board Workshop
July 7, 2020



The idea of keeping schools closed in the fall because of safety concerns for children might be “a bit of a reach.”

– Dr. Anthony Fauci

Preparing our school districts for Fall 2020

by Dr. David M. Aderhold -the Superintendent of Schools of the West Windsor-Plainsboro Regional School District in New Jersey and the president of the Garden State Coalition of Schools.

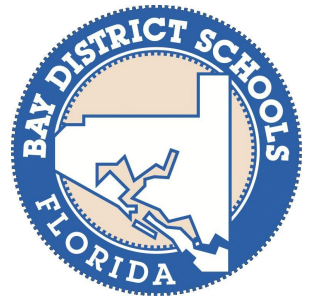
Here are 91 Questions to get us started: (Excerpt)

1. Who gets to determine the acceptable risk of foreseeable harm, illness, and potentially death in our public schools should we return from virtual instruction to in person instruction?
2. What will be the criteria and parameters to reopen schools? When will we receive a re-entry plan?
3. What will be the COVID-19 testing protocols for students, staff, visitors, etc.?



Statement from Emerald Coast Medical Association Board Members

- “While we all agree with this well thought out document, consensus among our board members is lacking when it comes to universal masking procedures. Although the AAP statement encourages the use of masks, there are similar articles which speak against universal masking policies in children, particularly in younger elementary age children.”
- “Our board unanimously supports the re-opening of schools in our district and echoes the statements made in the AAP document, which underscore the importance of in-person learning. We also understand that this is a fluid and changing process.”



Reopening Schools Task Force

Committees:

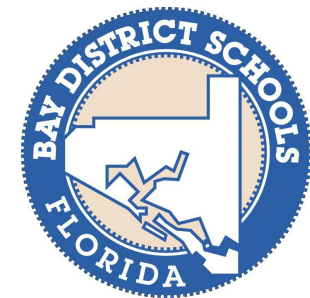
- Logistics Committee
- Secondary Committee
- Elementary Committee
- ESE/Student Services Committee

Stakeholders:

- School Administrators
- Community Members
- Parents
- School Health Program Partners
- Teachers
- School Support Staff

Discussions:

- Safety and Wellness of Students and Staff
- Academic Options for Brick and Mortar and Distance Learning
- Grading/Curriculum
- Mitigation/CDC Guidelines/Social Distancing
- Realistic and Reasonable strategies
- Athletics and Extracurricular Activities
- Transportation
- Facilities/Cleaning
- Cafeteria/Chartwells
- Enrollment/Attendance
- Medically fragile staff and students



Ia. All Schools Open

- All school boards and charter school governing boards must open brick and mortar schools **in August at least five days per week for all students**, subject to advice and orders of the Florida Department of Health, local departments of health, Executive Order 20-149 and subsequent executive orders.

Ib. Full Panoply of Services

- School districts and charter school governing boards must **provide the full array of services that are required by law** so that families who wish to educate their children in a brick and mortar school have the opportunity to do so.
- These services include in-person instruction (barring a local health directive to the contrary), specialized instruction, and services for students with IEPs or live synchronous or asynchronous instruction with the same curriculum as in-person instruction and the ability to interact with a student's teacher and peers as approved by the Commissioner of Education.

Substantial Increase in Costs to Safely Reopen Schools

WHAT WILL IT COST TO REOPEN SCHOOLS?

This document estimates some of the expenses school districts may incur in response to the COVID-19 pandemic and as they plan to reopen for the 2020–2021 school year. These calculations assume the statistics of an average* school district with 3,659 students, 8 school buildings, 183 classrooms, 329 staff members, and 40 school buses (transporting at 25% capacity, or 915 students, to comply with recommended social distancing guidelines).



ADHERING TO HEALTH MONITORING & CLEANING/DISINFECTING PROTOCOLS

Hand sanitizers for students in classrooms

\$39,517

Disinfectant wipes for classrooms

(four/day per classroom)

\$16,833

No-touch thermometer

(one per school)

\$640

Oximeter

(one per school)

\$360

Electrostatic disinfectant sprayers

\$33,600

Deep cleaning of school after a confirmed case

\$26,000



HIRING STAFF TO IMPLEMENT HEALTH & SAFETY PROTOCOLS

Additional custodial staff for increased cleaning/disinfecting of schools and buses to prevent spread

\$448,000

Ensuring at least one FT/PT nurse in every public school

\$400,000

Ensuring one aide per bus to screen student temperatures before boarding

\$384,000



PROVIDING PERSONAL PROTECTIVE EQUIPMENT (PPE)

Gloves for custodial staff

(five pairs/day for two custodians per school)

\$1,440

Daily disposable masks for in-school staff

\$44,415

Disposable masks for students who do not bring masks from home

(est. 30% of students)

\$148,190



PROVIDING TRANSPORTATION & CHILD CARE

Resume before/after school childcare programs

(with social distancing and cleaning protocols)

\$168,750

Fog machines and cleaner for buses

(7 machines)

\$55,860

Hand sanitizer for buses

\$10,534

TOTAL ADDITIONAL EXPENSES AN AVERAGE* DISTRICT MAY INCUR TO REOPEN:

\$1,778,139

*Costs will vary by district depending on many factors, including regional/market price as economy of scale (i.e., larger districts may have access to lower unit costs because they can buy in higher volumes), and the availability of labor and goods necessary to comply with recommended social distancing and cleaning protocols. Model assumes 25% transportation capacity to adhere to social distancing guidelines. (Bus fleets would need to quadruple in size to safely transport 100% of students under COVID-19 circumstances, which is financially unfeasible for districts.)

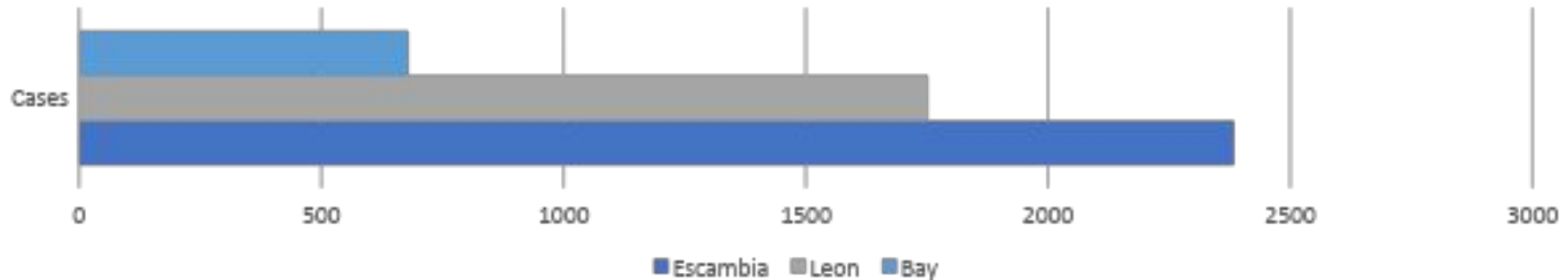
BDS is 7 x the size of this district.



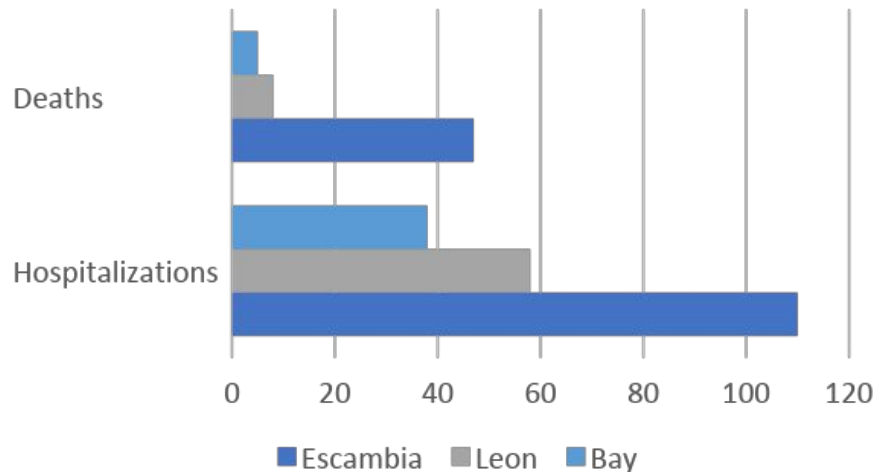
Coronavirus Summary provided by ESSENCE-FL

(Electronic Surveillance System for the Early Notification of Community-Based Epidemic)

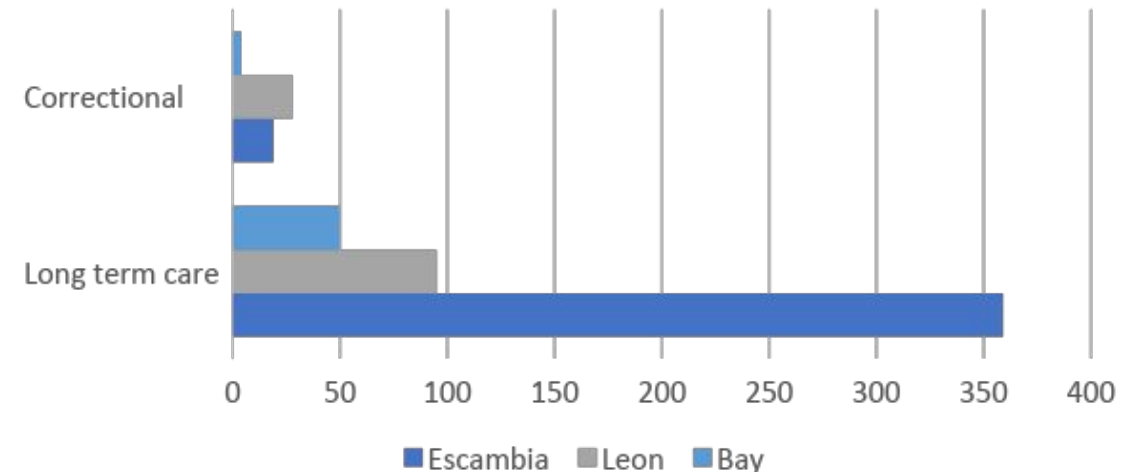
7/6/20 County Comparison: Bay, Leon, Escambia



Outcomes

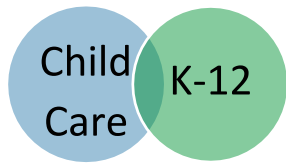


Cases in Facilities, Residents/Staff



Complete Data Report available:

http://ww11.doh.state.fl.us/comm/_partners/covid19_report_archive/county_reports_latest.pdf



Dimmer Switch Approach: K-12 Campus Reopening Steps 1-2-3

With the majority of child care programs already open, it is recommended K-12 campuses also begin to reopen in June, through a three step approach modeled here.

Step 1 – June – open up campuses for youth activities and summer camps.

Step 2 – July – expand campus capacities further for summer recovery instruction.

Step 3 – August – open up campuses at full capacity for traditional start of the academic year.

While there may be challenges regionally, Florida's workforce and students with the greatest needs are counting on schools to fight to stay open.

May 22, 2020, Governor DeSantis signed [EO 20-131](#), allowing youth activities, summer camps and youth recreation camps to operate. FDOH also release a [frequently asked questions document with guidance for organized youth activities](#).

BDS Summer Programs

Face to Face:

- Drivers' Ed (2 locations)
- Bay Base (8 sites)
- Summer Recovery Program (6 locations)
- Rising Kindergarten Summer Program (5 locations)

Virtual:

- 3rd grade Summer Reading Camp
- Summer Credit Recovery



BDS Summer Programs

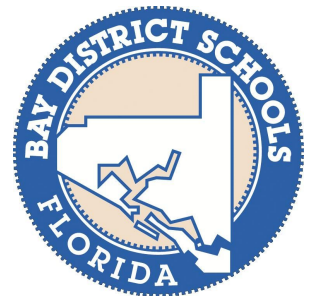


Extra-Curriculars



Sports, Band, Arts, Other Extracurriculars

- Three phase gradual return
- Screening & Monitoring
- Managing Schedules & Sessions
- Cleaning & Disinfection Procedures



BDS Summer Programs

Graduation Ceremonies Scheduled July 12th - July 24th

- Limited tickets for reduced capacity
- Multiple entry and exit points
- Check temperature of graduates and attendees
- Mark off seating for social distancing
- Separate seating options for attendees wearing masks/ masks optional
- Restrict field access to graduates/essential personnel
- No handshakes
- Live-stream with full audio and video

Class
of 2020



CLOSED?



What Will Happen if Schools Stay Closed?

1. For many students school is the safest place they can go
2. Pressure to reopen will increase from parents, politicians, and business community
3. Students receive a lower quality education
4. Digital education is not well suited to Title 1, economically disadvantaged, or disabled students
5. Students may be unable to stay on task due to:
 - Lack of supervision or neglect, reduced social learning
 - Inadequate learning space at home
 - Unreliable or poor internet access, and insufficient computer access
 - Increased distraction e.g., responsibility to care for younger siblings
 - Learning only on their smartphone
 - Physical or mental abuse at home
 - Partying or substance use at home
6. Lowered risk of transmission (or death) to siblings, parents, vulnerable grandparents or older adults



REOPEN?

What Will Happen if Schools Reopen?



1. Students will stop watching screens and engage their pre-frontal cortex
2. Students receive better quality education, education disparities will be reduced
3. Student mental health will improve and they will sleep better.
4. Students will get healthy breakfast, lunch, and snacks;
5. Students will be more physically active
6. Students will have access to nursing, counseling, social services
7. Parents, school personnel, and first responders can get back to work, get paid, and save lives
8. Federal and state funding may be available to support school safety
9. Students difficulty with social distancing, handwashing, constant hygiene, and masking
10. Schools difficulty reorganizing to meet recommended COVID controls and safety standards
11. Students will transmit COVID-19 to each other, faculty, staff



How to Protect Students and Staff

Follow these safeguards, recommended by public health experts

CDC
RECOMMENDED
STRATEGY

MASKS

Encourage the use of cloth face coverings



HANDWASHING

Washing hands often with soap and water for at least 20 seconds



SOCIAL DISTANCING

Limit group size and non essential visitors



CLEANING

Disinfect high-touch surfaces



MONITOR HEALTH

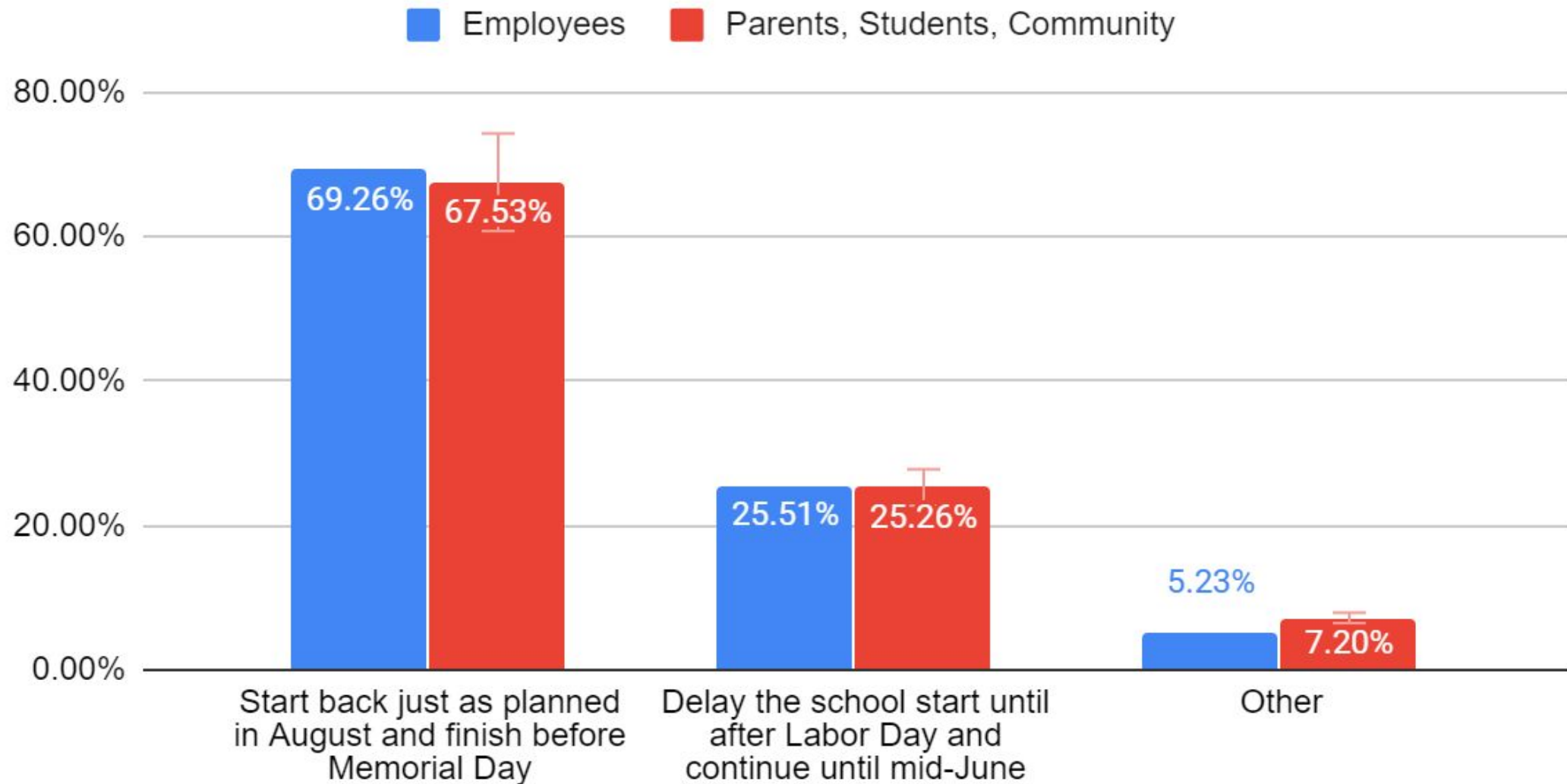
Watch for fever, cough, and other symptoms

DESIGNATE A COVID-19 CONTACT

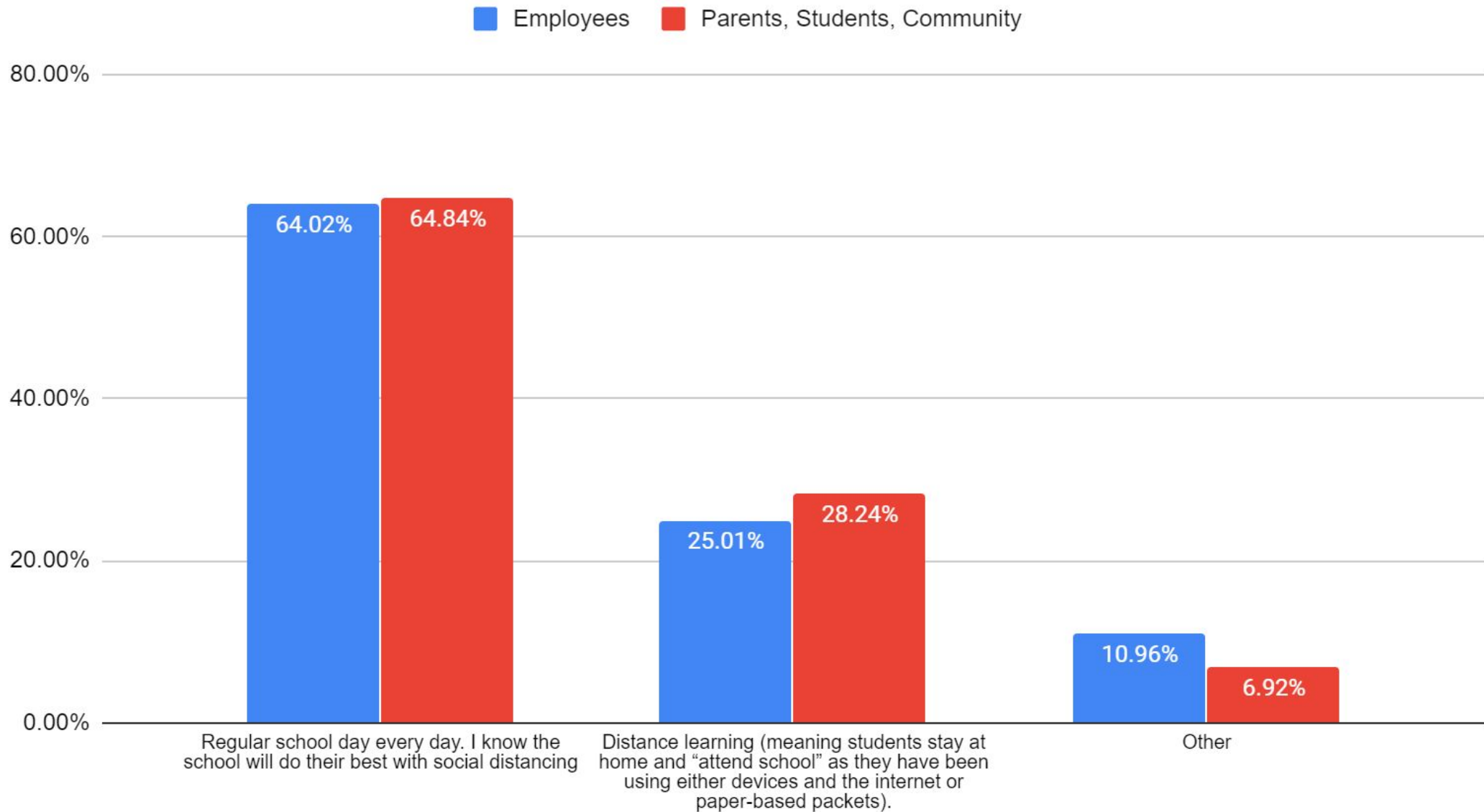
Appoint a staff person to be responsible for responding to COVID-19 concerns.



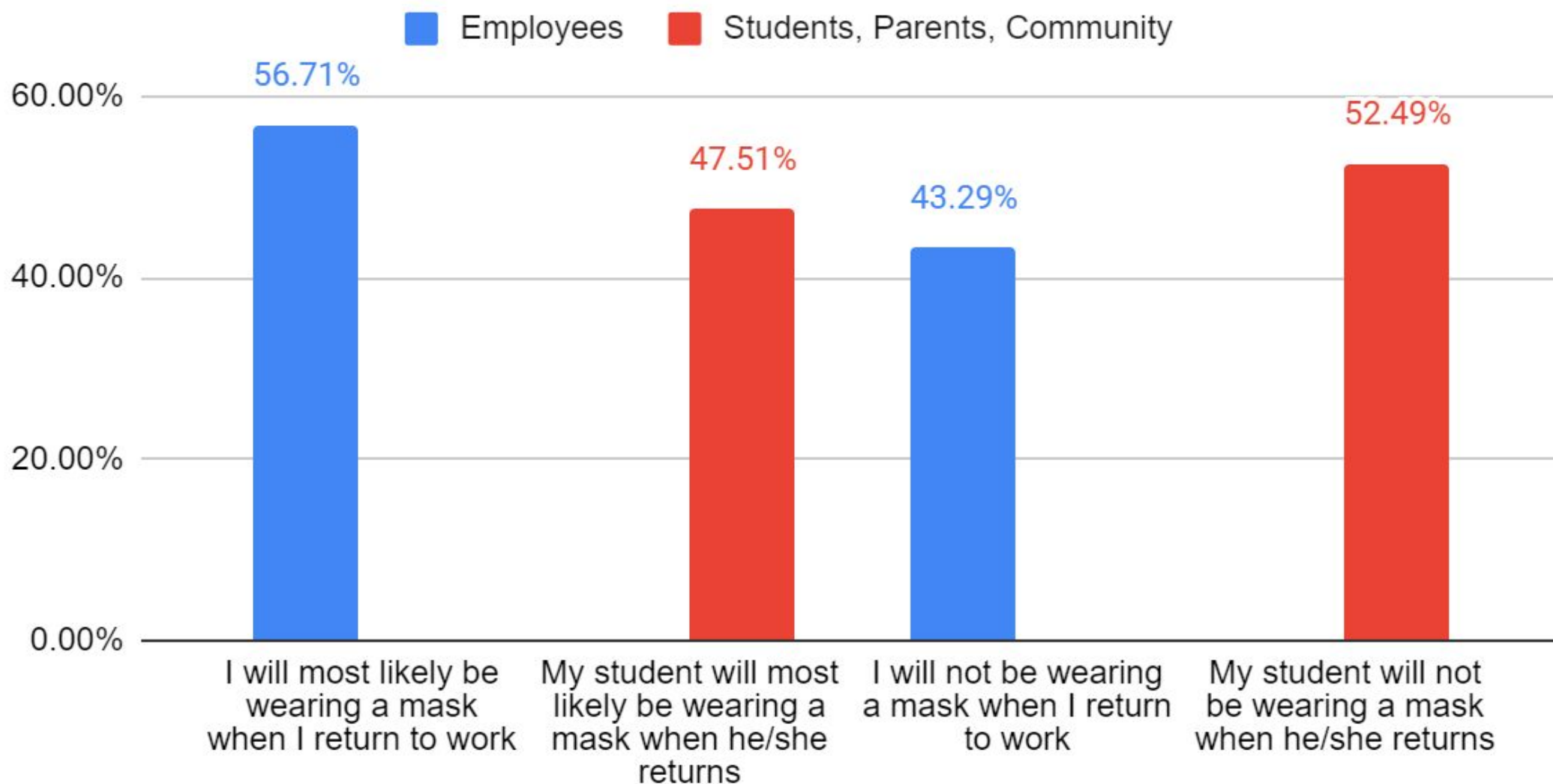
If this decision is allowed to be made locally, which school schedule do you prefer?



If this decision is allowed to be made locally, which daily schedule would you prefer?



When school returns, please choose the answer that best applies to you:



Proactive Actions Taken for 2020-2021 School Year



- Sought input from a variety stakeholders
- Researching best practices and plans from CDC, other districts, and local and state agencies
- Hiring additional staff at each school (One 8-hour custodial staff per school)
- Procuring additional disinfecting wipes, masks, cleaning supplies, hand sanitizer, and hand sanitizer dispensers
- Received face masks from DOE (for instructional staff)
- Updating of Board Policy regarding cloth face coverings
- Advertising LPN or RN to act as COVID-19 single-point of contact
- Convening teacher-led task groups to update curriculum and pacing guides to address COVID learning loss
- Planning for virtual professional development
- Continuing substitute incentives (monthly bonus, free fingerprinting and training)

Bay District Schools

Proposed Reopening Guidelines





2020-2021 BDS Enrollment Plan

Return to School: August 11th – 2 Enrollment Options

Option 1: Return to Normal Instruction at School Campuses

Parents send students back to school as normal while BDS follows CDC guidelines for student safety.

OR

Option 2: Enroll in Bay Virtual School (BVS)

Parents may elect to enroll their student in Bay Virtual School instead of returning to school campus to resume normal instruction. **When choosing this option, the student remains a BVS student from home through the entire semester and cannot re-enroll in their zoned school until the end of that semester.**

***This plan is for BDS Public-Non-Charter Schools Only**

Government Mandated Closure of School(s) : Distance Learning

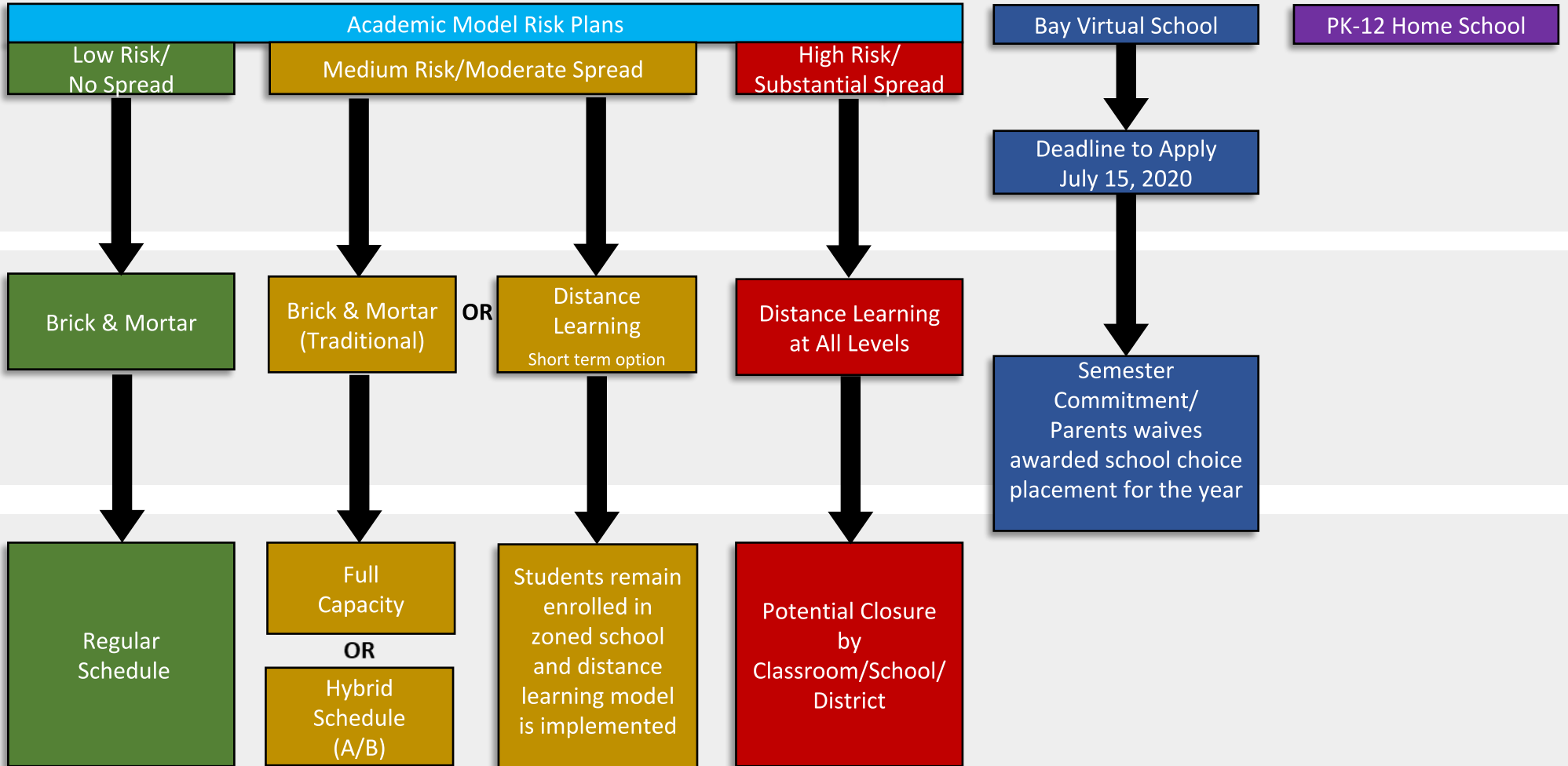
In the event of future outbreaks of COVID-19 that force one or more schools to close, BDS will implement a Distance Learning plan for instruction utilizing the CANVAS platform. Distance Learning occurs only when **all** students are physically prohibited to be on a school campus. The Distance Learning Plan excludes those enrolled in Bay Virtual School.

***Further Questions? Call the BDS Help Line at 767-HELP.**

Bay District Schools Return to School Guidelines

Level of Community Spread (COVID-19)

*[as determined by federal,
state, and local health
officials]*



BDS Proposed Reopening Guidelines

Communication

- Educate and reinforce health-related topics
- Send weekly alert (Importance of staying home when sick)
- Frequently update stakeholders
- Share resources from CDC and Department of Health

Attendance

- Follow current school board policy regarding attendance (7.105)
- Waive all Perfect Attendance Awards for the 2020-2021 School Year
- Prioritize safety and wellness of all students and staff



BDS Proposed Reopening Guidelines

Social Distancing/Mitigation- Students

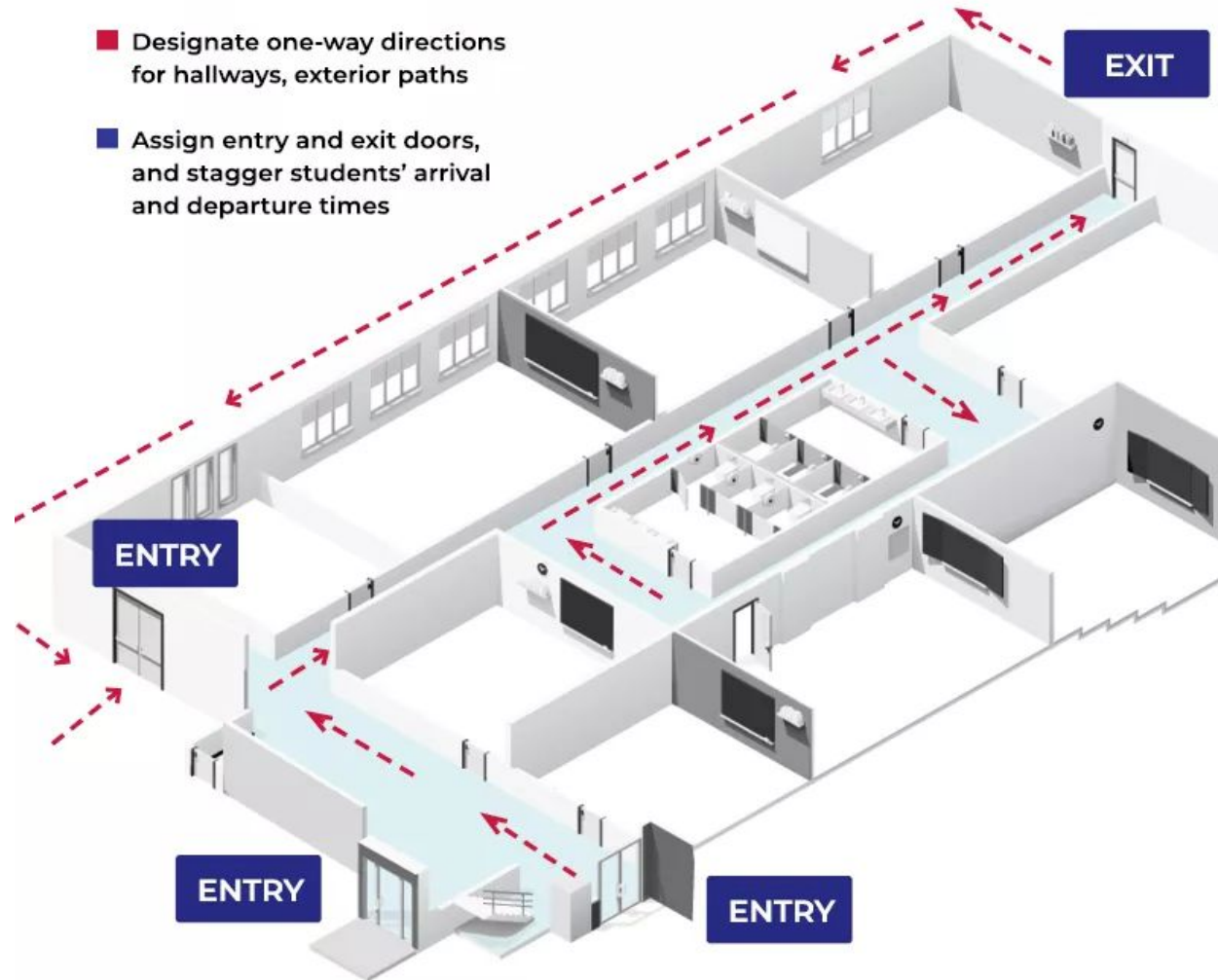
Implement based on the unique space and needs of each school

- Increase space between student desks
- No field trips, assemblies, or other large gatherings (due to inability to maintain proper social distancing)
- Reduce student movement
- Encourage PE to be held outside
- Minimize hallway congestion
- Identify hallway traffic patterns
- Assign individual materials
- Disinfect between use of shared items



Minimizing Congestion

- Designate one-way directions for hallways, exterior paths
- Assign entry and exit doors, and stagger students' arrival and departure times



SOURCE: National Council on School Facilities and Cooperative Strategies
Image: iStock/Getty

BDS Proposed Reopening Guidelines

Social Distancing - Cafeteria

Implement based on the unique space and needs of each school

- Adjust cafeteria processes/procedures
- Consider alternate eating locations
- Assign tables/seats in the cafeteria
- Consider utilizing outside spaces for eating if the weather permits
- Prepackage student lunch options
- Allow only approved faculty/staff and students



BDS Proposed Reopening Guidelines

Social Distancing- Student Drop-Off & Pick-Up

Implement based on the unique space and needs of each school

- Provide hand sanitizer dispensers
- Promote appropriate social distancing
- Allow multiple points of entry (entry and egress) as safety permits
- Implement and communicate a “stay in car” policy
- Stagger dismissal times and bus loading
- Reconsider student holding areas

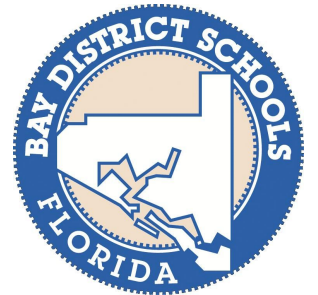


BDS Proposed Reopening Guidelines

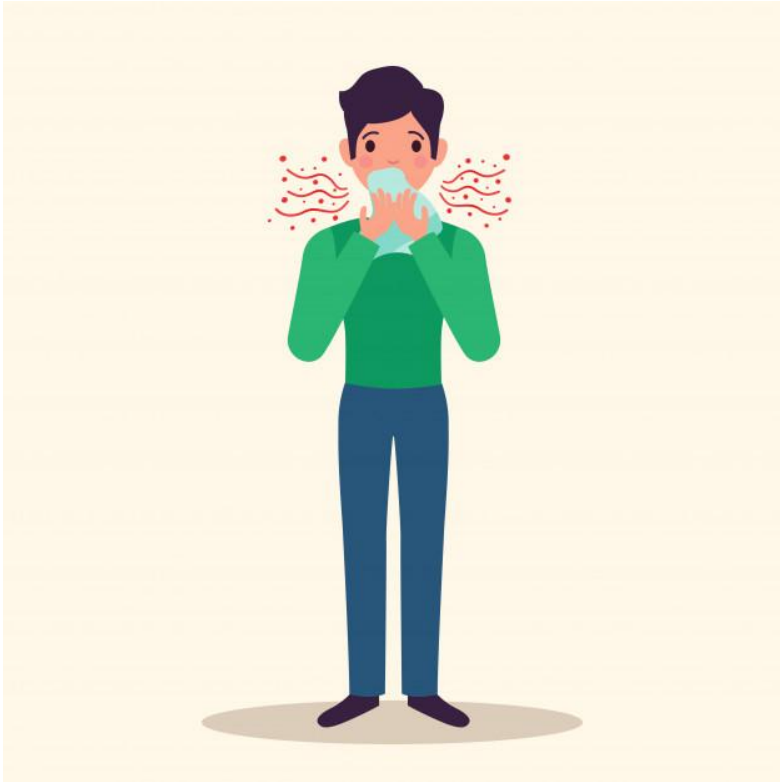


Social Distancing- Visitors

- Limit non-essential visitors
- Hold virtual meetings
- Provide opt out consent protocol (student mentors)



BDS Proposed Reopening Guidelines



Social Distancing - Employees

- Cover a cough or sneeze with the elbow or a tissue
- Minimize face-to-face meetings
- Avoid unnecessary travel
- Avoid congregating



BDS Proposed Reopening Guidelines

Symptom Recognition and Protocol- Employees

- Training
- Daily email
- Establish processes for persons exhibiting symptoms and confirmed cases
- FERPA and HIPAA regulations



BDS Proposed Reopening Guidelines

Face Coverings- Employees and Students

- Transportation
- Hallways/Transitions
- Classroom

Items for Consideration:

- Cost
- Availability
- Management
- Enforcement



BDS Proposed Reopening Guidelines

Maintain healthy environment through cleaning and disinfecting



- Routinely clean and disinfect surfaces and objects
- Follow manufacturer's instructions
- Provide EPA-registered disposable wipes and hand sanitizer dispensers
- Ensure adequate supplies
- Train custodial staff



BDS Proposed Reopening Guidelines

Buses

- Training
- Sanitize and disinfect
- Seating charts
- Open bus windows
- Provide hand sanitizers
- Establish special considerations for students with health care needs



BDS Proposed Reopening Guidelines

Temperature Checks

Places/Events/Programs

- Bus stops
- School entry
- Practices (Sports, band, etc.)
- Competitions



Items for consideration:

- Personnel
- Instructional time
- Supervision
- Documentation/logging
- Privacy/confidentiality

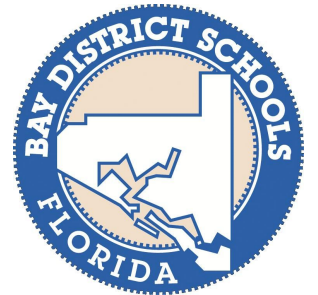


BDS Proposed Reopening Guidelines



Healthy Hygiene Practices

- Teach and reinforce healthy hygiene practices
- Display posters and visual aides
- Provide training for staff and students



Symptoms of COVID-19

Fever

Shortness of breath or difficulty breathing

Muscle or body aches

Cough

Sore throat

Congestion, runny or stuffy nose

Headaches

Chills

Fatigue

Nausea or vomiting

Diarrhea

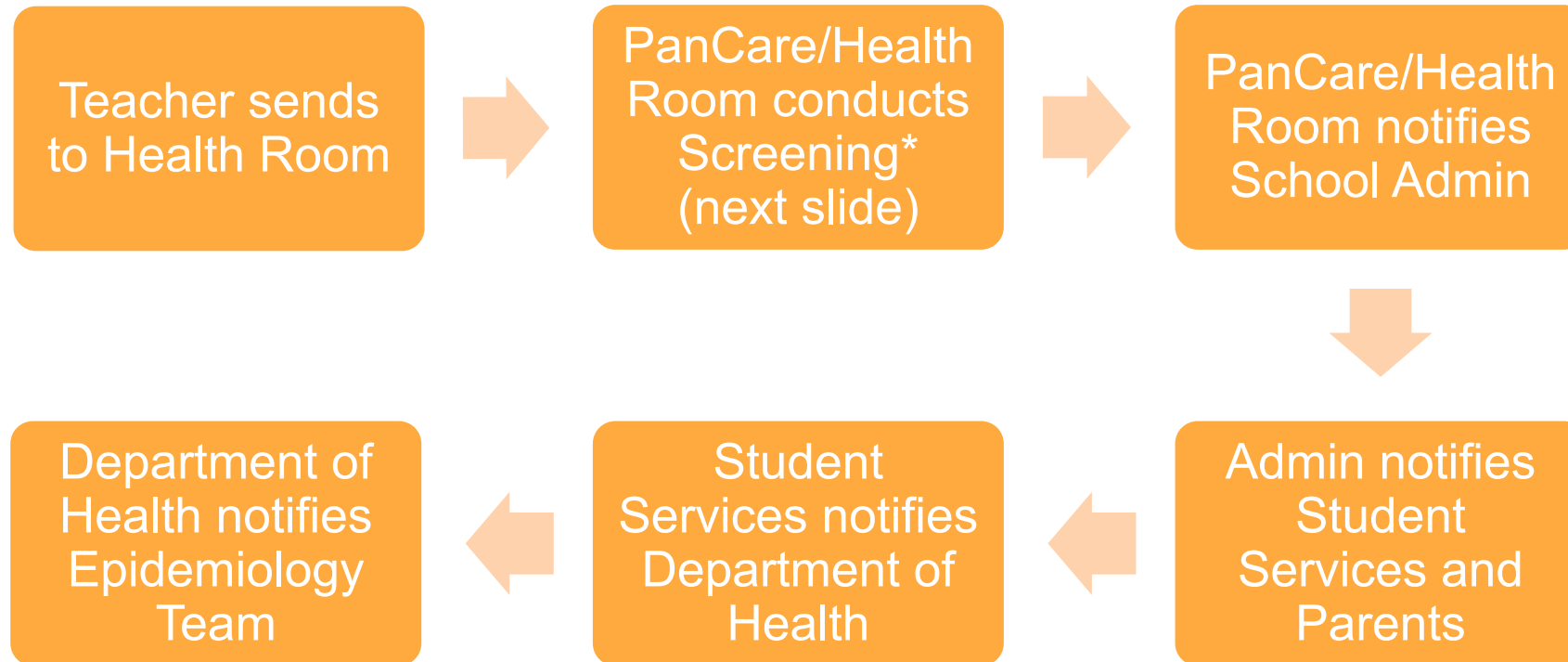
New loss of taste or smell

Source: <https://www.cdc.gov/coronavirus/2019-ncov/symptoms-testing/symptoms.html>



BDS Proposed Reopening Guidelines

Protocol for Responding to a Confirmed Case of COVID-19



Health Tech coverage for the Health Room and for COVID-19 Screening



One HT is assigned to the Health Room and one is assigned to screen students who present with possible COVID-19 symptoms.

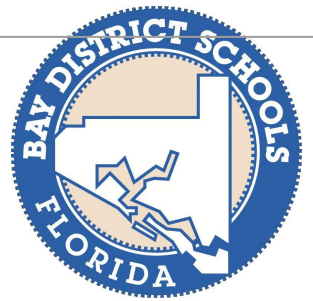
Health Tech for COVID-19 Screening	Health Tech for Health Room
Screens students who present with COVID-19 symptoms	Maintains Health Room
Determines if student should receive a mask	
If student is determined to have possible COVID-19 symptoms, notifies appropriate school staff	
Escorts student with possible COVID-19 symptoms to the isolation space and remains with the student in the isolation space.	The Health Room HT moves to the screening table and covers the screening table while the COVID-19 Screening HT is in the isolation room. BDS staff covers the Health Room until the COVID-19 Screening HT can return.
Once the student is picked up, the COVID-19 Screening HT returns to the screening table.	Once the COVID-19 Screening HT returns to the screening table the Health Room HT returns to the Health Room.



- At the BDS Telehealth schools, when students present with COVID-19 symptoms parents will be contacted and offered a Telehealth encounter with a PanCare provider.
- All student telehealth encounters require parental consent.
- Current telehealth schools include: Breakfast Point, Callaway, Cedar Grove, Deane Bozeman, Deer Point, Hiland Park, H. Beach, Lucille Moore, Lynn Haven, M. Cherry St., Parker, Northside, Patronis, Southport, St. Andrew, and Waller.
- PanCare is working with BDS Student Services to expedite telehealth rollout at the remaining Bay District schools. Grant funding (2019 DLT & SAMHSA) has been secured.
- PanCare can provide on-site COVID-19 rapid testing for both students and staff.

BDS Proposed Reentry Guidelines

Students with Signs & Symptoms	Students with a Confirmed Case of COVID-19
<p data-bbox="84 525 800 575">Can return to school when:</p> <ul data-bbox="84 661 1261 986" style="list-style-type: none"><li data-bbox="84 661 1261 782">● Symptom/fever free for 72 hours without the assistance of medication<li data-bbox="479 796 570 846">OR<li data-bbox="84 861 1261 986">● Provides a “return to school” note from a primary care provider	<p data-bbox="1302 525 2018 575">Can return to school when:</p> <ul data-bbox="1302 661 2448 1043" style="list-style-type: none"><li data-bbox="1302 661 2448 782">● Symptom/fever free after 10 days from the onset of initial symptoms<li data-bbox="1538 796 1666 846">AND<li data-bbox="1302 861 2448 1043">● Provides a “return to school” note from a primary care provider or the department of health



BDS Proposed Reopening Guidelines

Planning for Individuals with Symptoms of COVID-19

- Designate an “isolation space”
- Have PanCare Health Techs and/or LPNs screen/temp check symptomatic students
- Keep Health Room open for students with daily medication or any other medical needs
- Train at least 3 staff in Level I Med Assistance
- Clean/Disinfect isolation space
- Hire a School Health Liaison position
- Plan for situations when parent unable to pick up



BDS Proposed Reopening Guidelines

Cleaning and Disinfecting After a Confirmed Case of COVID-19

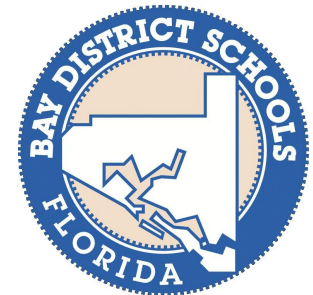
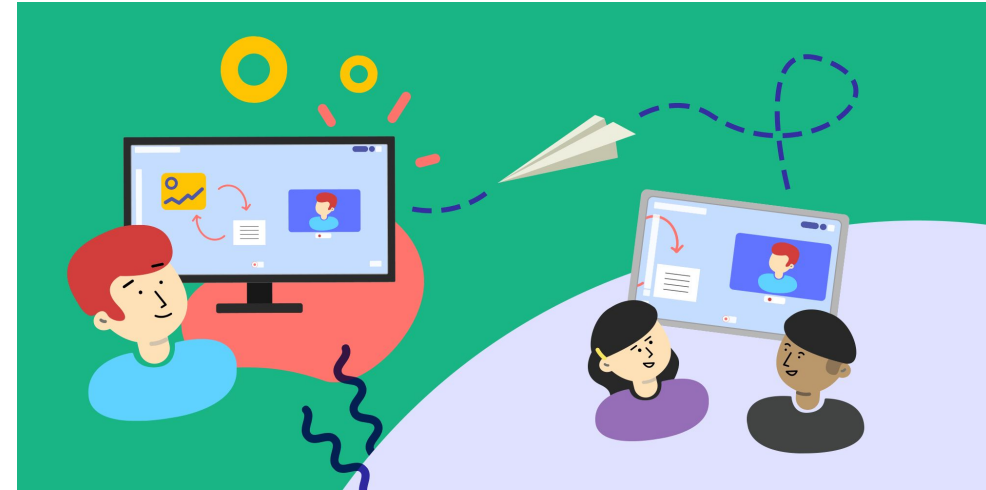
- Close off areas and wait as long as practical before cleaning and disinfecting. If possible, wait up to 24 hours before beginning cleaning and disinfection.
- Custodial staff clean and disinfect all areas used by the ill persons
- Clean dirty surfaces using soap and water prior to disinfection
- Only EPA-approved products should be used



BDS Proposed Reopening Guidelines

Temporary Closure

- Collaborate with DOH-BC
- Communicate to stakeholders
- Clean/disinfect site and equipment
- Determine any necessary cancellations
- Notify FLDOE of confirmed cases and school closures
- Begin distance learning via the CANVAS platform



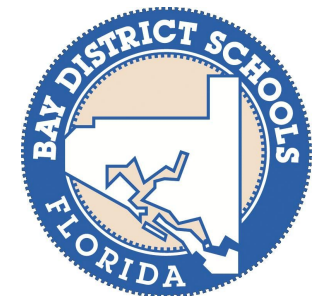
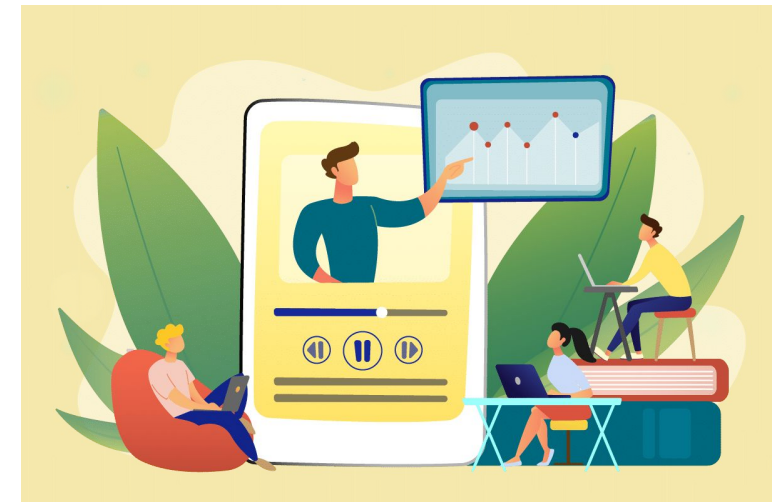
BDS Proposed Reopening Guidelines

Academics (Distance Learning)

- Distance Learning implemented in the event of school closure
- Develop a flexible plan for digital and non-digital learning
- Plan to utilize a single online platform (Canvas)
- Determine most effective strategies for at-home support
- Continuously reflect and improve

Academics (Hybrid Model)

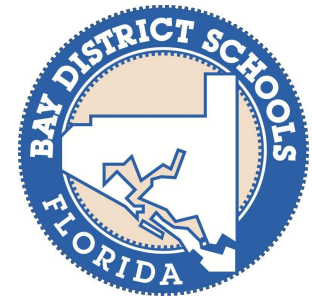
- Hybrid Model implemented in the event smaller class sizes are required
- Blend of face to face and distance learning
- Pre-identify students for A/B grouping



BDS Proposed Reopening Guidelines

Academics (Return to School):

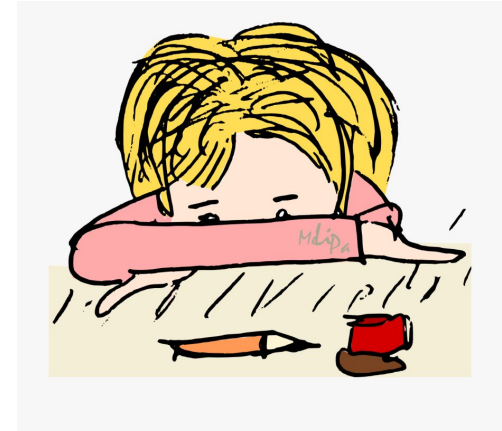
- Prioritize critical prerequisite skills and knowledge
- Adapt scope and sequence/pacing guidance
- Train teachers and leaders to diagnose students' unfinished learning
- Focus on proven instructional strategies
- Diagnose students' unfinished learning
- Identify student academic needs
- Address opportunity gaps
- Create realistic and manageable learning goals
- Ensure access to appropriate tools and resources
- Monitor student progress and adjust supports



BDS Return to School- Potential Concerns

Stressors that may put students at a higher risk of **trauma**:

- parental substance use and abuse
- exposure to domestic violence
- homelessness
- financial, food, occupational, housing insecurity
- grief/loss



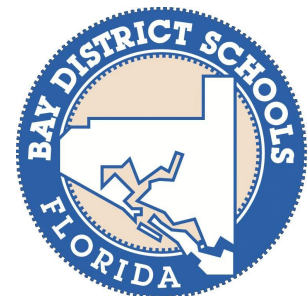
Duration and frequency of those stressors: Hurricane Michael and now COVID-19



BDS Return to School- Potential Concerns

Academic Concerns:

- Existing learning loss attributed to Hurricane Michael
- Inconsistent behavior and academic expectations for several months
- Reduced coverage of end of the year material
- Unwilling or unable to participate in distance learning
- Academic regression (more than typical summer loss)

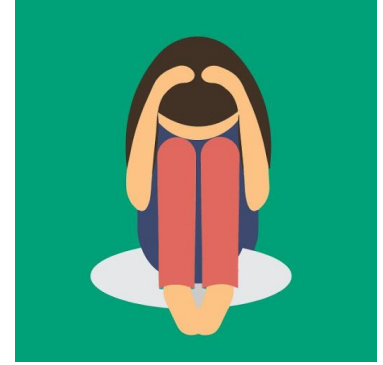


Anxiety:

- Separation (family, home, parents, etc.)
- Fear of catching the virus
- Fear of being academically behind
- Fear of being around people after months of social isolation

Signs of Distress may include:

- Regression in academics or behavior
- Nightmares (trouble sleeping)
- Difficulty concentrating
- Worry about future
- Trouble relating to peers
- Changes in behavior
- Sadness or feeling overwhelmed
- Fear



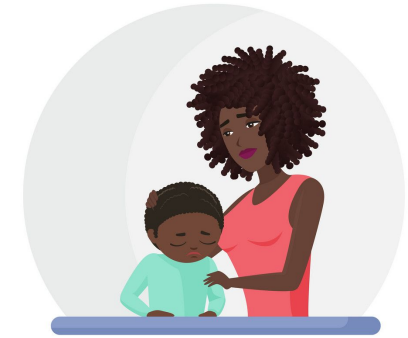
IDENTIFY · SUPPORT · SERVE



BDS Return to School- Potential Concerns

Signs of Distress may also include:

- Withdrawal
- Increased irritability or anger
- Depressed mood and/or mood swings
- Increased use of drugs or alcohol
- Suicidal ideations
- Development of new mental health illness or intensification of previously identified illness

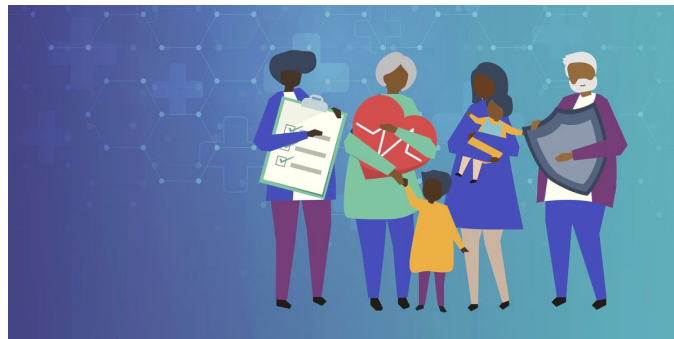


IDENTIFY · SUPPORT · SERVE



BDS Recommendations for Return to School

- Trauma-Informed Practices module
- Road Map/Pacing Guide for SEL (Socio-Emotional Learning) lessons and activities
- Implement an SEL Universal Screener for K-12
- Utilize TRIAD team members
- Provide additional after-school socio-emotional support to students (SAMSHA grant)
- Use Telehealth Kiosks



Questions



Thank You

